

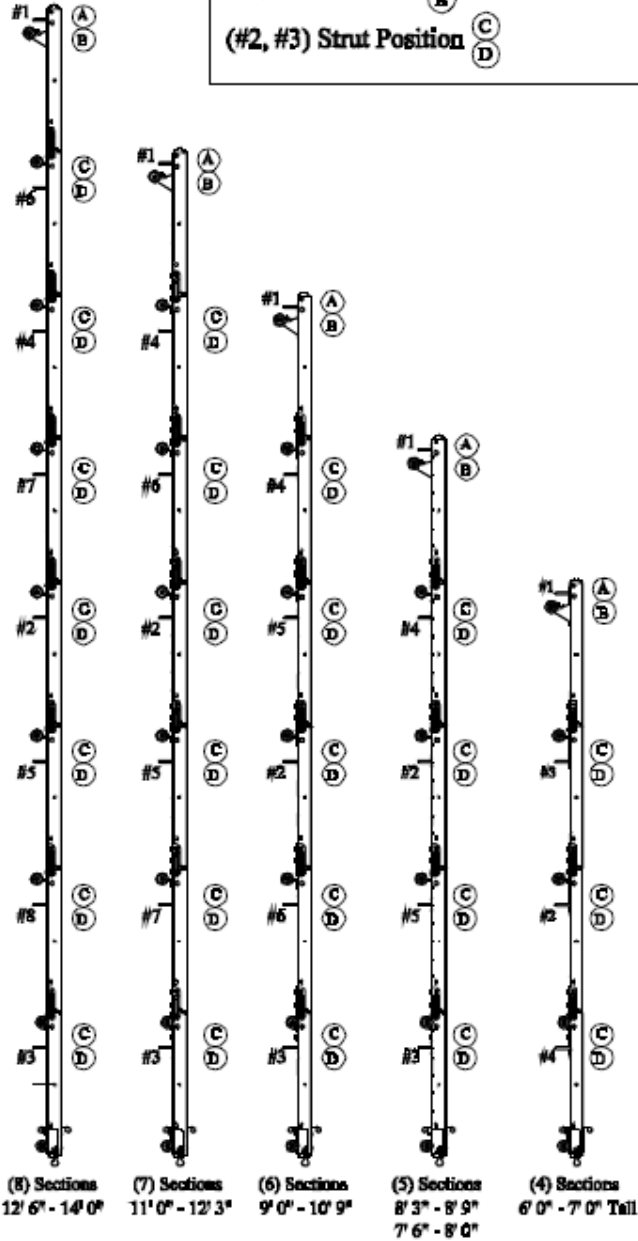


Example: 16' x 9'-3" (6 sections)

Requires (3) Struts (#1, #2, #3)

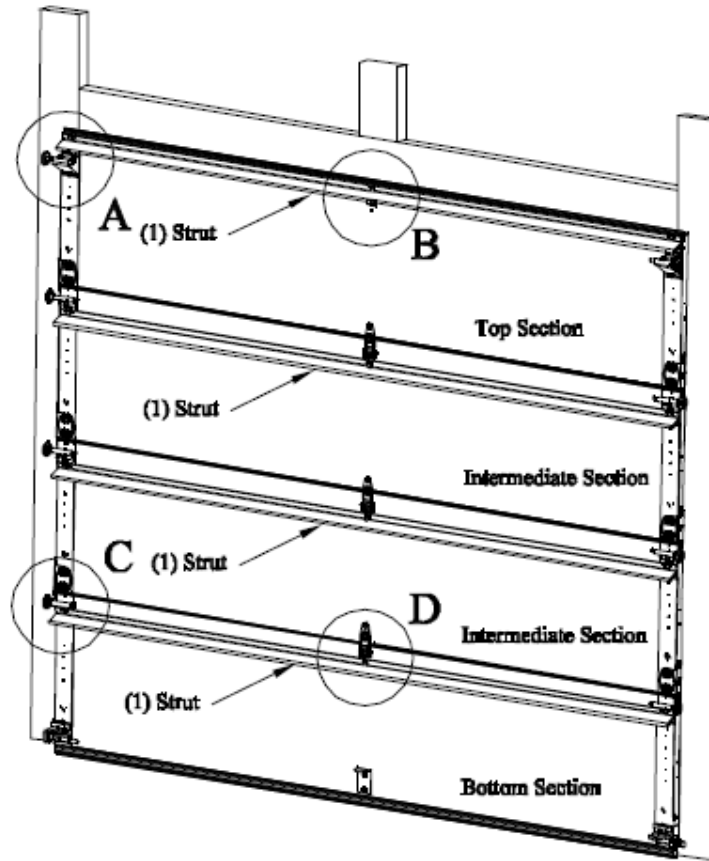
(#1) Strut Position   
 (#2, #3) Strut Position 



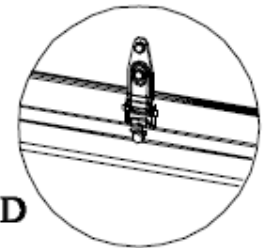
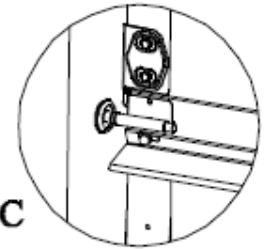
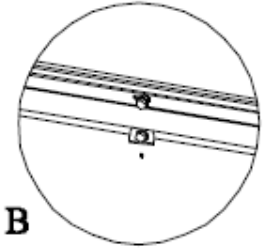
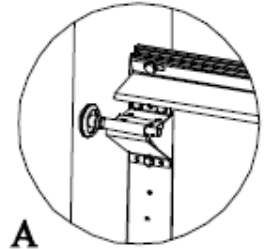
### Strut Schedule: Stonehaven ST3000, Oak Island OS3000, Hanover HR3000

Door Width	6'-0" - 7'-0" 4 Sections	7'-6" - 8'-0" 5 Sections	8'-3" - 8'-9" 5 Sections	9'-0" - 10'-9" 6 Sections	11'-0" - 12'-3" 7 Sections	12'-6" - 14'-0" 8 Sections
6'-0" - 10'-0"	0	0	0	0	0	0
10'-2" - 16'-0"	1 (2")	2 (2")	3 (2")	3 (2")	4 (2")	4 (2")
16'-2" - 18'-0"	3 (2")	4 (2")	5 (2")	6 (2")	7 (2")	8 (2")
*18'-2" - 20'-0"	3 (2")	4 (2")	5 (2")	6 (2")		

Note: All doors are not available in all heights.  
 \* Heritage 3000 Only



# ASSA ABLOY



### Strut Placement Schedule

Stonehaven ST3000, Oak Island ST3000, Hanover HR3000

ASSA ABLOY Entrance Systems

165 CARRIAGE COURT  
 WINSTON-SALEM, N.C. 27105